

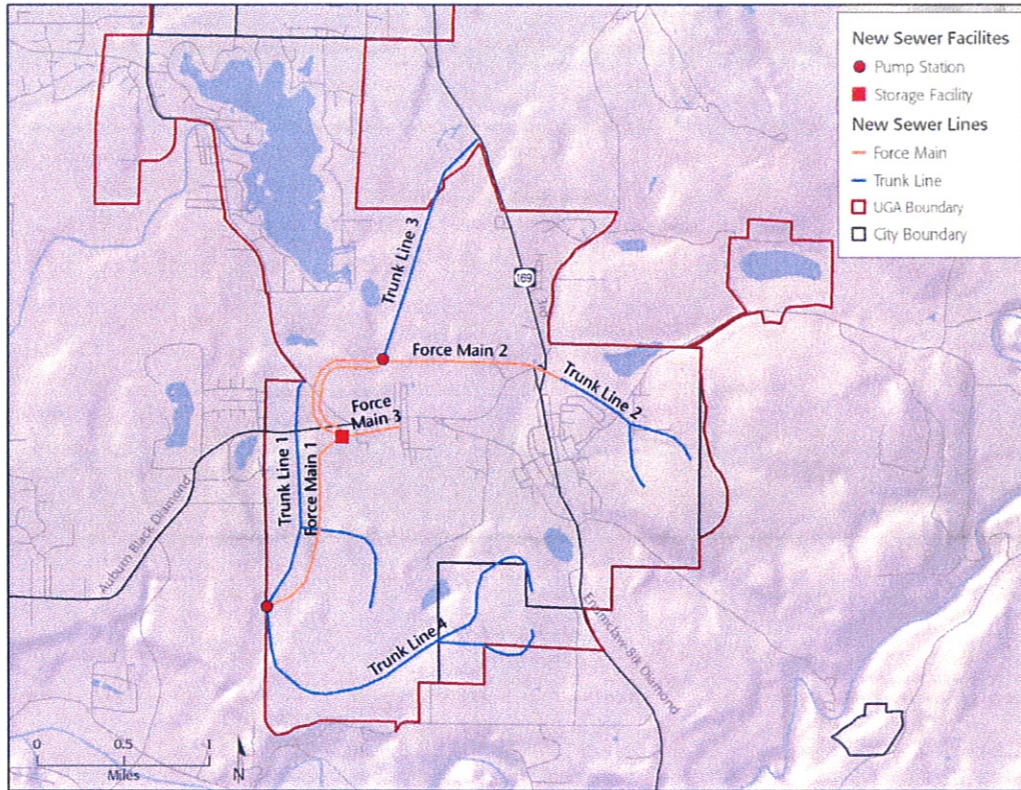
City of Black Diamond Comprehensive Plan



June 2009

do not build toward the City Sewer System Plan will not be granted Sewer Capital Facility Charge Credit.

Figure 8-2. Sewer Capacity Projects



8.11. Stormwater System

8.11.1. Storm Drainage System Concept, Objective, and Policies

Storm Drainage System Concept

The City recognizes that a Comprehensive Storm Drainage Plan is needed to manage the stormwater runoff within the City. The plan should emphasize measures to address the adverse impacts of poor water quality of the stormwater runoff to the natural drainage systems. This plan should also address the volume of water impacts on receiving waters. Of primary concern are the steep channel of Lawson Creek and the outflow of Mud Lake. Larger creeks are less of a concern because of the shallow slopes and the large receiving bodies of water including the Rock Creek Wetland,