

# **LAKE SAWYER 2018**

## **Lake Stewardship Monitoring Report**

King County Water & Land Resources Division  
Science & Technical Support Section  
[www.kingcounty.gov/EnvironmentalScience](http://www.kingcounty.gov/EnvironmentalScience)

---

### **Summary & Recommendations**

*Thank you to Kenneth Docktor, the volunteer monitor for Lake Sawyer.*

**The key takeaways from the 2018 monitoring season are:**

- Lake Sawyer continued to have fairly clear water, with moderate nutrient concentrations and algal growth.
- Long-term trends suggest that water quality in Lake Sawyer has been improving over time, with decreasing nitrogen and chlorophyll concentrations.
- No algal blooms were reported for toxin testing in 2018.

**The Lake Stewardship Program recommends:**

- Monitoring is a key part of good lake stewardship, building a valuable long-term dataset to guide lake management and detect any future problems. Continue to monitor Lake Sawyer through the Lake Stewardship Program.
- 

### ***In this report:***

- **What We Measure & Why**
- **Water Quality Results & Trends**
  - 2018 monitoring results
  - Long-term annual averages
  - Trends over time
- **Trophic State**
  - Trophic state indices
  - Comparison map
- **Supplemental Data**
  - Summary statistics
  - Water column profile
  - Total alkalinity
  - Water color

## **What We Measure & Why**

- **Secchi depth** is a measure of water clarity or transparency. Secchi depth is shallower when there are more suspended particles in the lake, such as sediment or algae. Secchi depth is also affected by water color, often from tannins or other naturally occurring organic molecules.
- **Water temperature** can affect the growth rates of plants and algae. In addition, cooler or warmer water temperatures favor different species of fish and other aquatic organisms.
- **Chlorophyll-a** is a measure of the amount of algae in a lake. Chlorophyll-a is a pigment necessary for algae to photosynthesize and store energy.
- **Phosphorus** and **nitrogen** are naturally occurring nutrients necessary for growth and reproduction in both plants and animals. Increases in nutrients (especially phosphorus) can lead to more frequent and dense algal blooms.
- The **ratio of total nitrogen to total phosphorus (N:P)** indicates whether nutrient conditions favor the growth of cyanobacteria (blue-green algae). When N:P ratios are near or below 25, cyanobacteria can dominate the algal community. This is important because cyanobacteria have the ability to produce toxins.

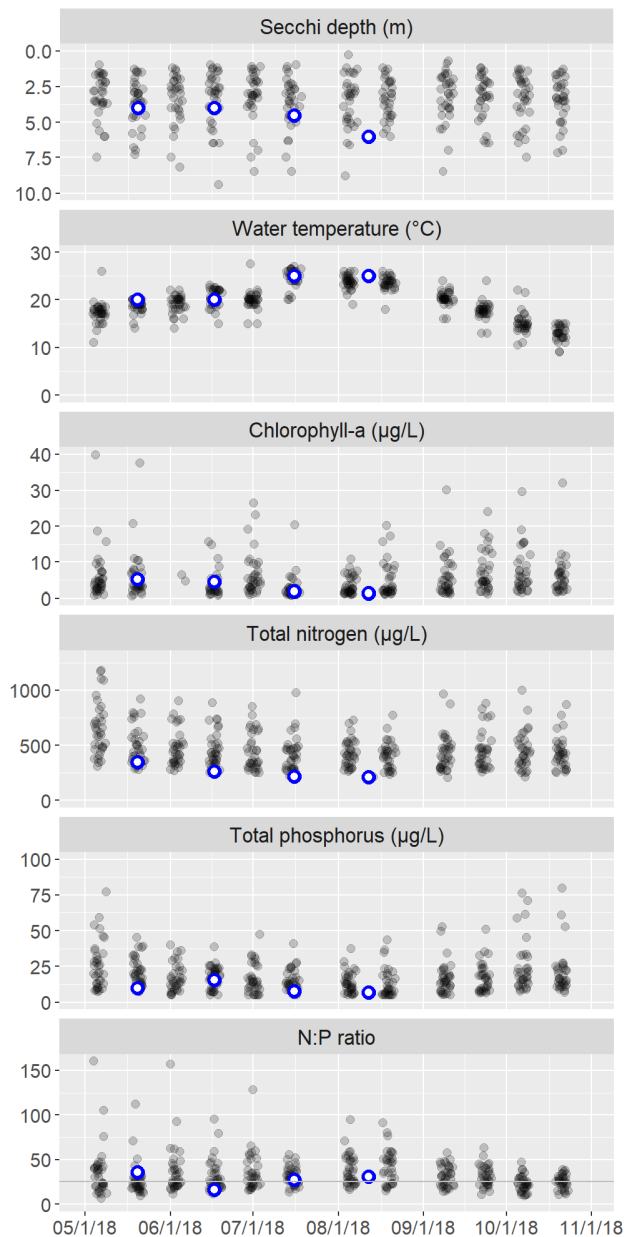
## **Water Quality Results & Trends**

The following graphs show the water-quality parameters that are sampled from May through October, at 1 m depth (additional depths and parameters are measured on profile days; see *Supplemental Data*). The left column of graphs shows results for each sampling date in 2018, and the right column shows average values for each year (May-October averages).

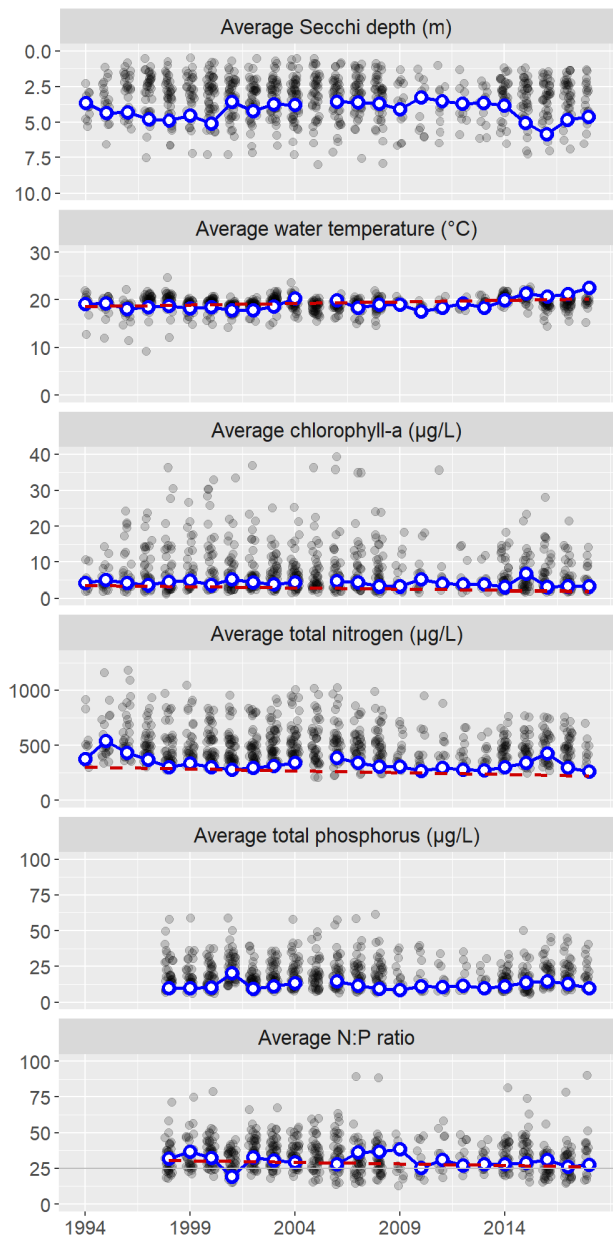
Data for Lake Sawyer are the blue circles (with white centers) connected by the blue line. Any gaps in the blue line indicate missed samples. To provide some context for these values, the grey points in the background are results for all other lakes in the Lake Stewardship program.

Any long-term trends in Lake Sawyer are drawn with a dashed red line and described further after the graphs. Statistical trend analyses used a seasonal (monthly) Kendall test ( $p < 0.05$ ).

## 2018 Monitoring Results



## Long-Term Annual Averages



Lake Sawyer was only sampled once per month (the typical Lake Stewardship sampling frequency is twice per month), as specified in the current monitoring agreement with the City of Black Diamond. No samples were collected in September or October because low lake levels prevented the volunteer monitor from launching his boat.

Nitrogen-to-phosphorus (N:P) ratios were periodically below 25, indicating times when the algal community was more likely to be dominated by cyanobacteria (which have the ability to produce toxins).

The table below gives more details about the long-term trends. Results are presented as an average amount and percent of change per decade (the increase or decrease over ten years). Percent change is calculated as the percent of the estimated value in 1994, when monitoring started.

Parameter	Change per Decade	(%)
Water temperature	0.62 °C	(3.3%)
Chlorophyll-a	-0.62 µg/L	(-19%)
Total nitrogen	-33 µg/L	(-11%)
N:P ratio	-2.2	(-6.9%)

Long-term trends suggest that water quality in Lake Sawyer has been improving over time, with decreasing nitrogen and chlorophyll concentrations. There is no evidence of a trend in phosphorus concentrations over time.

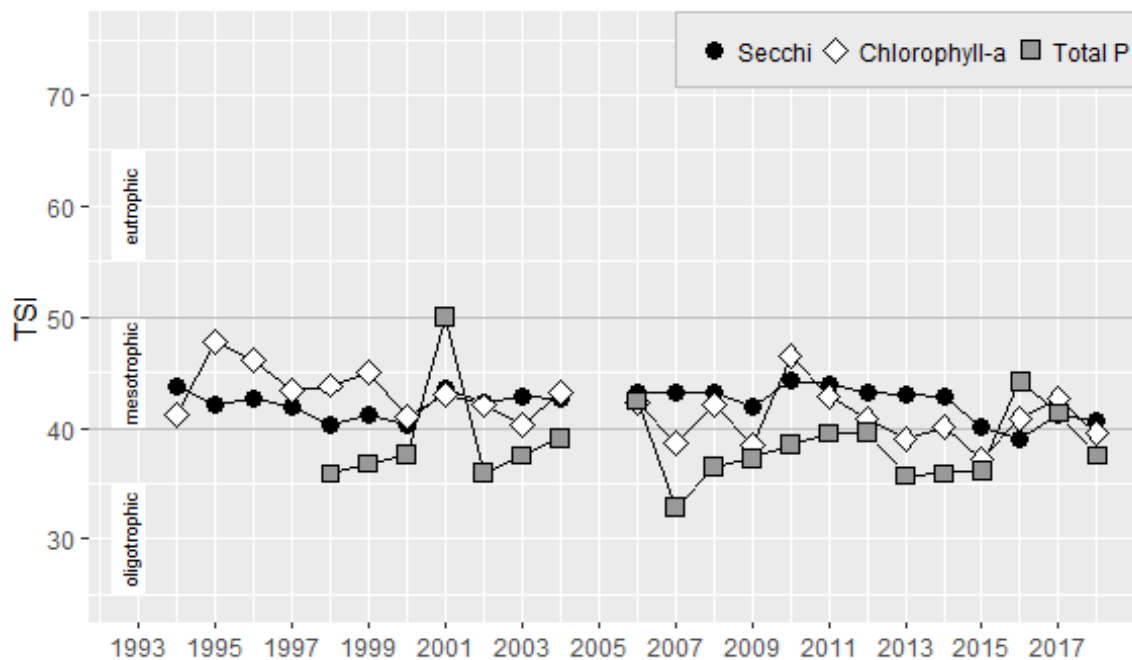
## **Trophic State**

The Trophic State Index (TSI) is a common index of a lake's overall biological productivity. TSI values are calculated from Secchi depth, chlorophyll-a concentrations, and total phosphorus concentrations. These three TSI estimates are all scaled between 0 and 100.

TSI calculations use average values from June-September, focusing on fairly consistent "summer" conditions. This is in contrast with the annual averages shown above, which also include May and October data.

*Oligotrophic* lakes (TSI <40) are very clear, with low nutrient concentrations and low algal growth. *Eutrophic* lakes (TSI >50) have less-clear water, with high nutrient concentrations and high algal growth. Eutrophic lakes are more likely to have frequent algal blooms. *Mesotrophic* lakes (TSI 40-50) are in the middle, with fairly clear water, and moderate nutrient concentrations and algal growth. Lakes in lowland King County have a range of different natural trophic states, and human activities may also alter a lake's trophic state (usually by changing nutrient inputs).

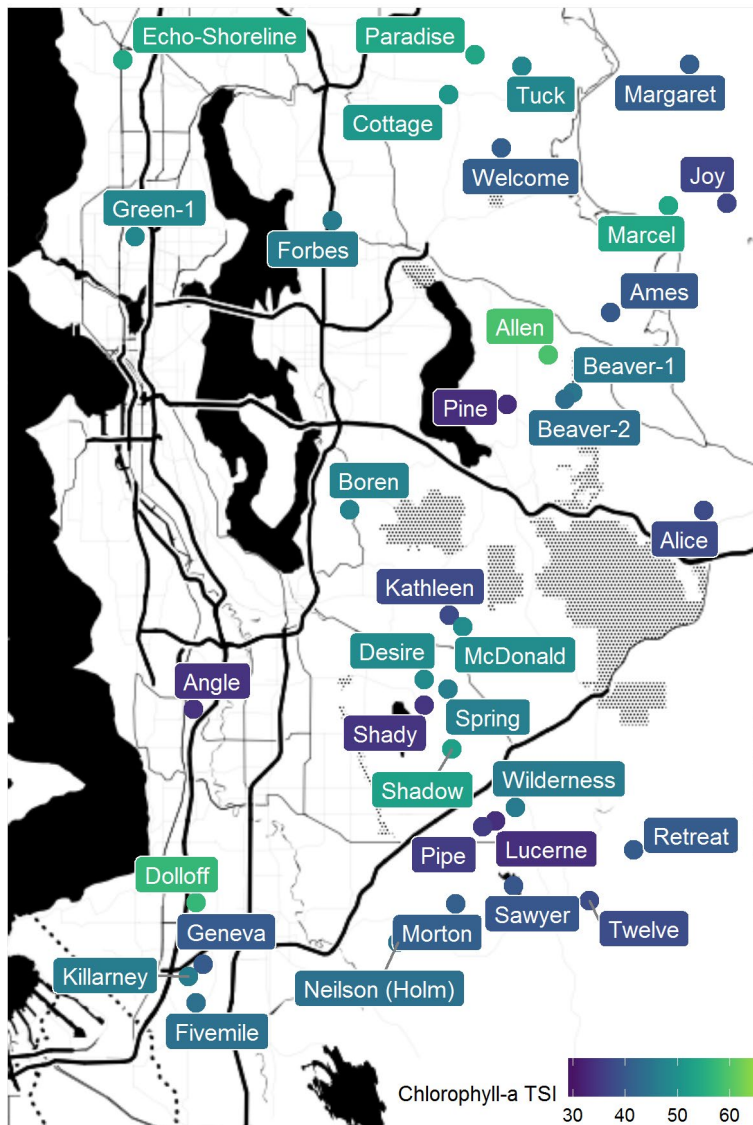
## **Trophic state indices**



In 2018, the TSI values were around the mesotrophic-oligotrophic boundary.

## Comparison map

For a comparison with other lakes, this map shows the trophic state for each lake in the King County Lake Stewardship program in 2018. The color of each circle indicates the lake's average chlorophyll-a TSI value for the year.



## Supplemental Data

### Summary statistics

This table summarizes data from May-October 2018 (1 m depth only), giving the minimum, mean (average), and maximum values for each parameter. To reduce biases from missing data or changes in sampling frequency, monthly means were calculated and then averaged to give an overall mean.

Parameter	Minimum	Mean	Maximum
Secchi depth (m)	4.0	4.6	6.0
Water temperature (°C)	20.0	22.5	25.0
Chlorophyll-a (µg/L)	1.3	3.2	5.2
Total nitrogen (µg/L)	213.0	259.5	348.0
Total phosphorus (µg/L)	6.9	10.1	15.7
N:P ratio	16.5	27.6	35.5

### Water column profile

In May and August, water was collected at the mid-lake sampling station from three depths in a water-column profile: 1 m, the middle depth of the water column, and 1 m from the lake bottom.

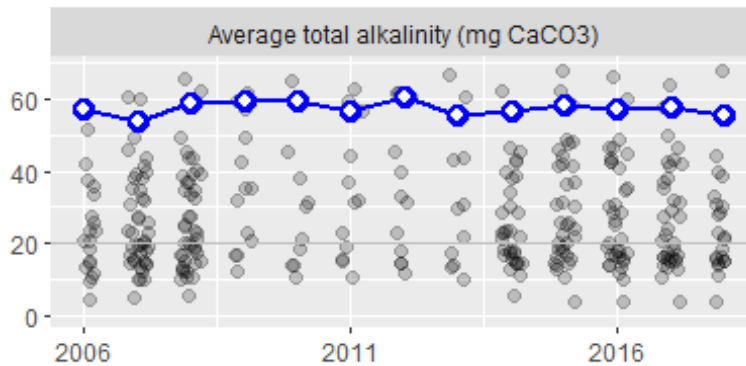
Date	Depth	Temp	Chlor	Pheo	TN	NH3	NO2/3	TP	OPO4
5/20/2018	1	20.0	5.2	(2.0)	348	17.5	134.0	9.8	(0.5)
	8	9.0	2.4	(2.0)	437	–	–	6.1	–
	15	7.0	–	–	463	2.7	303.0	15.4	1.9
8/12/2018	1	25.0	1.3	(1.1)	213	(2.0)	(10.0)	6.9	0.9
	8	7.0	7.3	3.2	474	–	–	42.3	–
	15	10.0	–	–	396	185.0	(10.0)	99.8	8.2

Parameter abbreviations are: chlorophyll-a (Chlor), pheophytin (Pheo), total nitrogen (TN), ammonia (NH3), nitrate/nitrite (NO2/3), total phosphorus (TP), orthophosphate (OPO4). Depth is in m, temperature is in °C, and all other parameters are in µg/L. Dashes indicate parameters that were not analyzed for a given sample. Values below the method detection limit (MDL) are enclosed in parentheses and have the value of the MDL substituted.

## Total alkalinity

A lake's ability to resist acidification, also called its buffering capacity, is measured as "total alkalinity." Lakes with total alkalinity less than 20 mg CaCO<sub>3</sub> are considered sensitive to acidification. We measured total alkalinity in May and August (on profile-sampling days) at 1 m depth. In 2018, the average total alkalinity of these two samples was 55.6 mg CaCO<sub>3</sub>.

The blue circles (with white centers) and blue line are annual average alkalinity values for Lake Sawyer. Grey points in the background are results for all other lakes in the Lake Stewardship program.

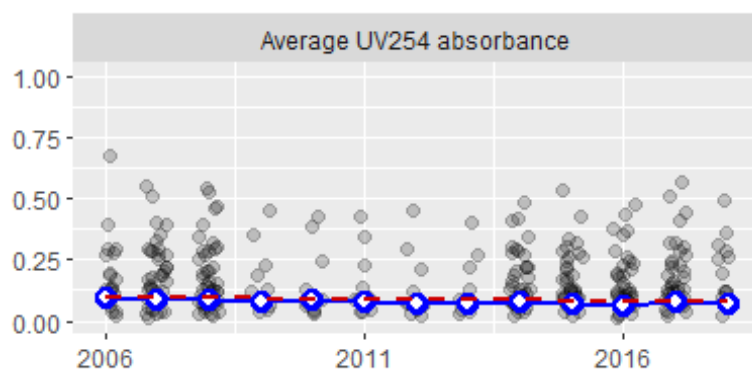




## Water color

Water color affects a lake's water clarity (and Secchi depth). Water color is measured by shining a specific wavelength of ultraviolet light (254 nm) through a filtered water sample and measuring the percent that was absorbed. We measured UV254 absorbance in May and August (on profile-sampling days) at 1 m depth. In 2018, the average UV254 absorbance of these two samples was 0.07, on a scale where 0 is no absorbance (perfectly clear) and 1 is complete absorbance (perfectly opaque).

The blue circles (with white centers) and blue line are annual average UV absorbance values for Lake Sawyer. Grey points in the background are results for all other lakes in the Lake Stewardship program. The dashed red line shows the long-term trend in UV absorbance, with an average change of -0.013 absorbance units (-14%) per decade.



### King County

Department of Natural Resources and Parks  
Water and Land Resources Division

#### Science and Technical Support Section

King Street Center, KSC-NR-0600  
201 South Jackson Street, Suite 600  
Seattle, WA 98104  
206-477-4800 TTY Relay: 711  
[www.kingcounty.gov/EnvironmentalScience](http://www.kingcounty.gov/EnvironmentalScience)