

STORMWATER MANAGEMENT ACTION PLANNING

CITY OF BLACK DIAMOND

MAY 26, 2022

PURPOSE OF OUR MEETING

“To brief interested members of the public regarding the Stormwater Management Action Planning (SMAP) project currently being developed by the City and its consultant.”

The presentation includes:

- a brief review of what is included in the SMAP
- the schedule and required Ecology submittals, including a Receiving Water Assessment, Basin Ranking and Prioritization, and Action Plan
- how the public can provide feedback.

WHY IS THIS ISSUE IMPORTANT?

- The work is required by the City's NPDES Western Washington Municipal Stormwater Permit.
- Soliciting input from the community is important to the success of the plan.
- The SMAP will provide direction on protecting and enhancing the City's waterbodies

PERMIT-REQUIRED WORK

SMAP is a permit-required phased effort that must be completed no later than March 31, 2023.

SMAP informs and assists in the long-term development of policies, strategies, and stormwater management tools to protect Black Diamond receiving waters.

Issuance Date:	July 1, 2019
Effective Date:	August 1, 2019
Expiration Date:	July 31, 2024

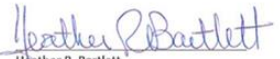
Western Washington Phase II Municipal Stormwater Permit

National Pollutant Discharge Elimination System and
State Waste Discharge General Permit for discharges from
Small Municipal Separate Storm Sewers
In Western Washington

State of Washington
Department of Ecology
Olympia, WA 98504-7600

In compliance with the provisions of
The State of Washington Water Pollution Control Law
Chapter 90.48 Revised Code of Washington
and
The Federal Water Pollution Control Act
(The Clean Water Act)
Title 33 United States Code, Section 1251 et seq.

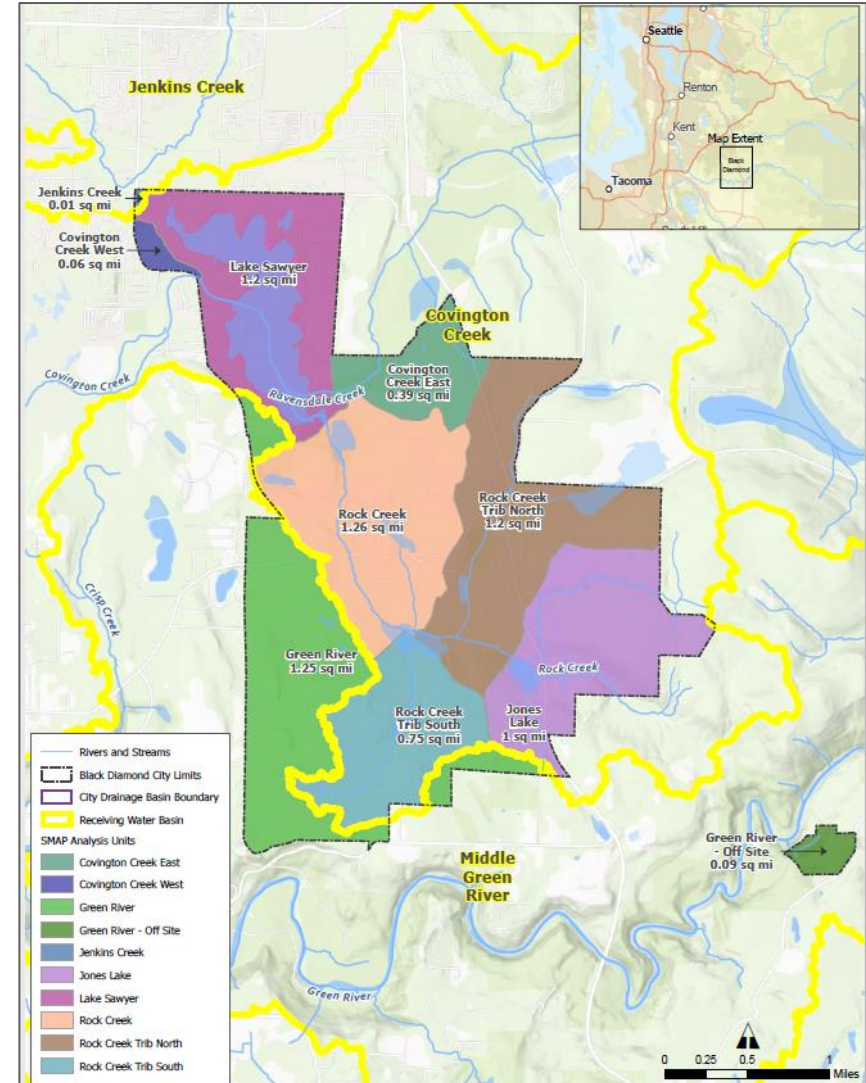
Until this Permit expires, is modified, or revoked, Permittees that have properly obtained coverage under this Permit are authorized to discharge to waters of the State in accordance with the special and general conditions which follow.


Heather R. Bartlett
Water Quality Program Manager
Department of Ecology

STORMWATER ACTION PLANNING - THREE ELEMENTS

Ecology-Required Elements:

- Watershed Delineation/Receiving Water Inventory (03/31/2022)
- Receiving Water Assessment Ranking and Prioritization (06/30/2022)
- Final Stormwater Management Action Plan (03/21/2023)



SCORING, RANKING, AND PRIORITIZATION

How are the preferred drainage areas defined and prioritized?

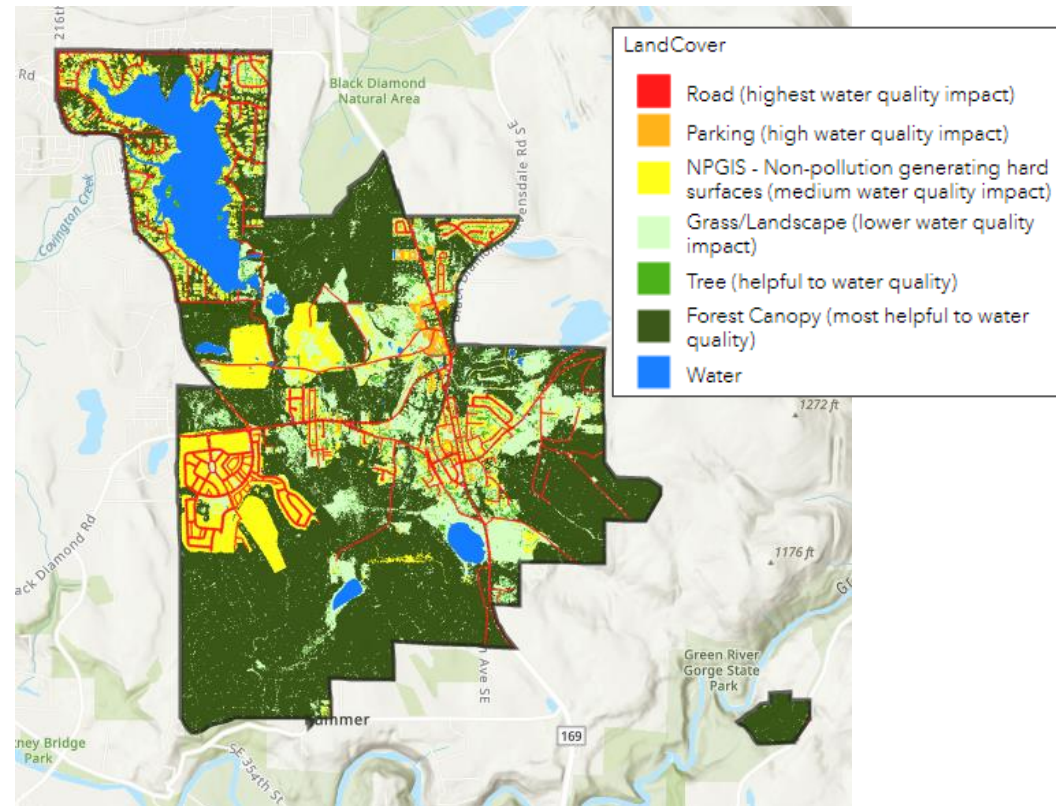
- Basins defined and delineated – about 1 square mile, follows natural drainage areas
- Map basin land uses and impervious surfaces
- Score land use impacts and stormwater controls
- Rank and prioritize drainage basins

SORING AND RANKING

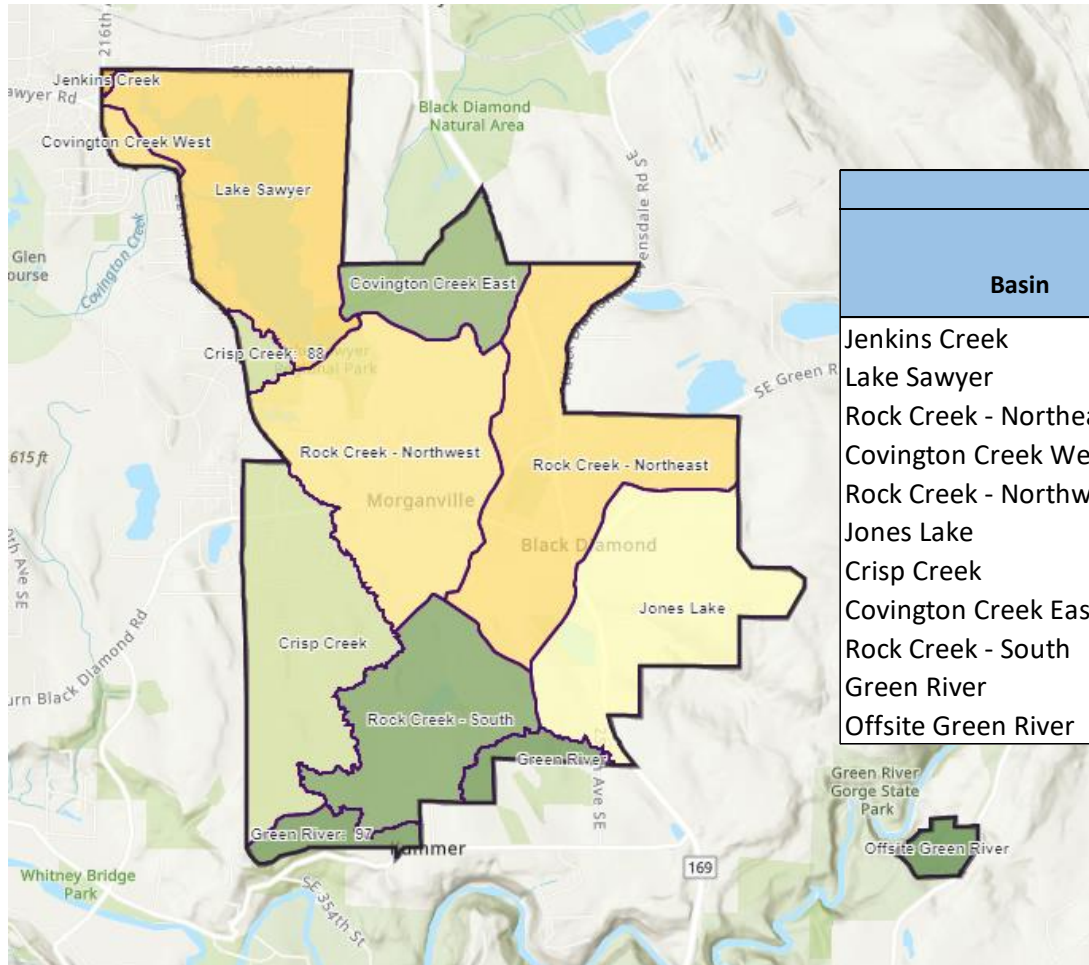
- **SMAP basins are given a water quality and flow control score on a scale of 1-100**

Scoring Components

- Land Cover Type (including impervious surfaces)
- Existing stormwater treatment



SCORING, RANKING, AND PRIORITIZATION



Basin	Current Score			
	Existing Treated Score			Composite
	Water Quality	Flow Control		
Jenkins Creek	43	35		39
Lake Sawyer	41	37		39
Rock Creek - Northeast	67	66		67
Covington Creek West	70	66		68
Rock Creek - Northwest	73	68		71
Jones Lake	80	81		80
Crisp Creek	86	89		88
Covington Creek East	93	93		93
Rock Creek - South	93	94		93
Green River	97	97		97
Offsite Green River	99	99		99

OTHER KEY PRIORITIZATION FACTORS

- Capital projects and drainage problem areas
- Redevelopment plans, growth centers, transit
- Existing water quality or flooding problems
- **Community support and preferences**
- Equity and under-served communities

PROVIDING YOUR COMMENTS - STORYMAP

- [For the Storymap and Survey, follow this link](#)

Black Diamond Stormwater Management Action Planning (SMAP)

The City of Black Diamond is committed to clean water, and we need your help! See how you can get involved See how you can get involved.

Scroll down to get started!

[Why Are We Doing SMAP](#) [What is Runoff](#) [Community Benefit](#) [SMAP Process](#) [Maps](#) [Get Involved!](#)



COMMUNITY INPUT NEEDED!

Provide Comments Through:

- Public Input Map
- Public Survey

City of Black Diamond - Public Input Map

Click here to explore project information in an interactive map and drop comment pins to provide your input!

<https://parametrix.maps.arcgis.com>



City of Black Diamond - SMAP Public Survey

As a city we have to make choices on how to spend a limited amount of money on stormwater management. Please provide your input for the SMAP using the survey below. The goal of this survey is to understand and consider your priorities as part of the SMAP process.

*Indicates required response

Do you think the City should prioritize protecting streams from polluted rainwater runoff or managing local flooding on streets?*

Choose which is more important to address

☐ Pollution

☐ Flooding

To better manage polluted rainwater runoff, do you think the City should increase tree canopy or work to keep roadways clean from debris and chemicals?*

Choose what action is more important

☐ Increasing tree canopy

☐ Cleaning roadways

COMMUNITY INPUT NEEDED!

COMMENT TODAY

- Community members
- Stakeholders

COMMENT LATER

- Send your comments to the contact portals – open now through March 31, 2023

PUBLIC INPUT MAP

- Storymap – open now through June 27, 2022

PUBLIC SURVEY

- Website – closes June 27, 2022

FUTURE COMMUNITY INPUT OPPORTUNITIES

- Watch the webpage for additional information
- Comment portals always open
- Future meeting – July/August Draft Plan overview

THANK YOU FOR YOUR INPUT!

- Please send comments to:
publicworks@blackdiamondwa.gov